



European Monitoring Centre
for Drugs and Drug Addiction

ESPAD

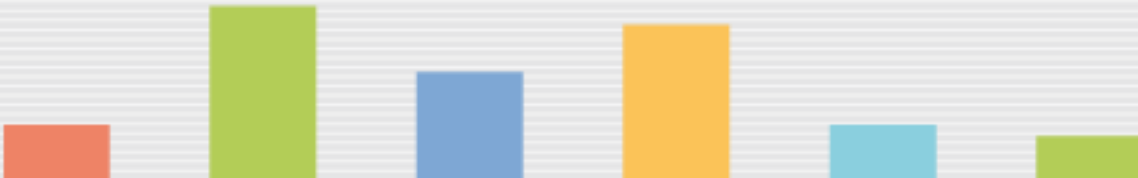


Figure 1a. Daily cigarette use: prevalence in the last 30 days (percentage)

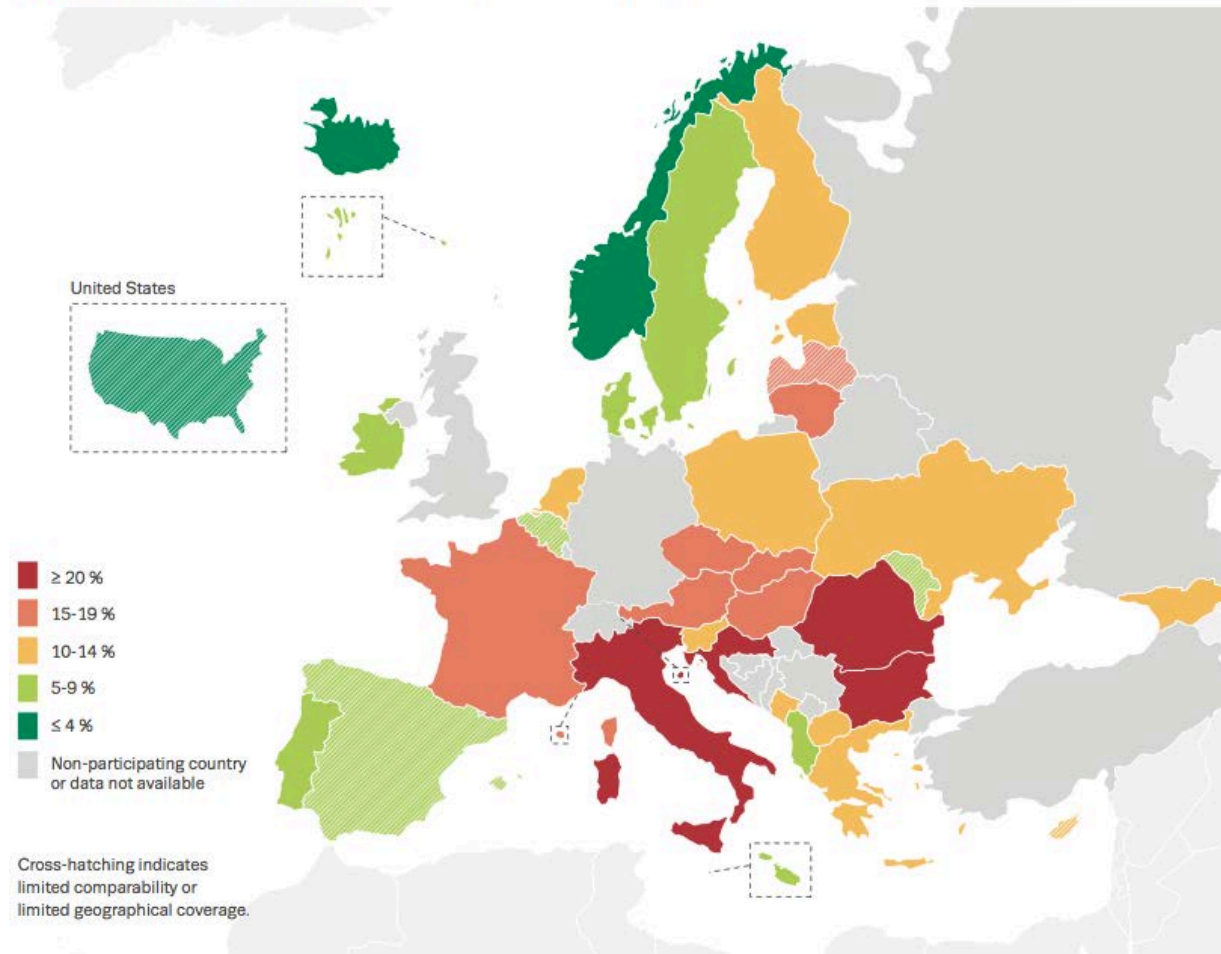


Figure 2a. Frequency of alcohol intake in the last 30 days (mean number of occasions among users)

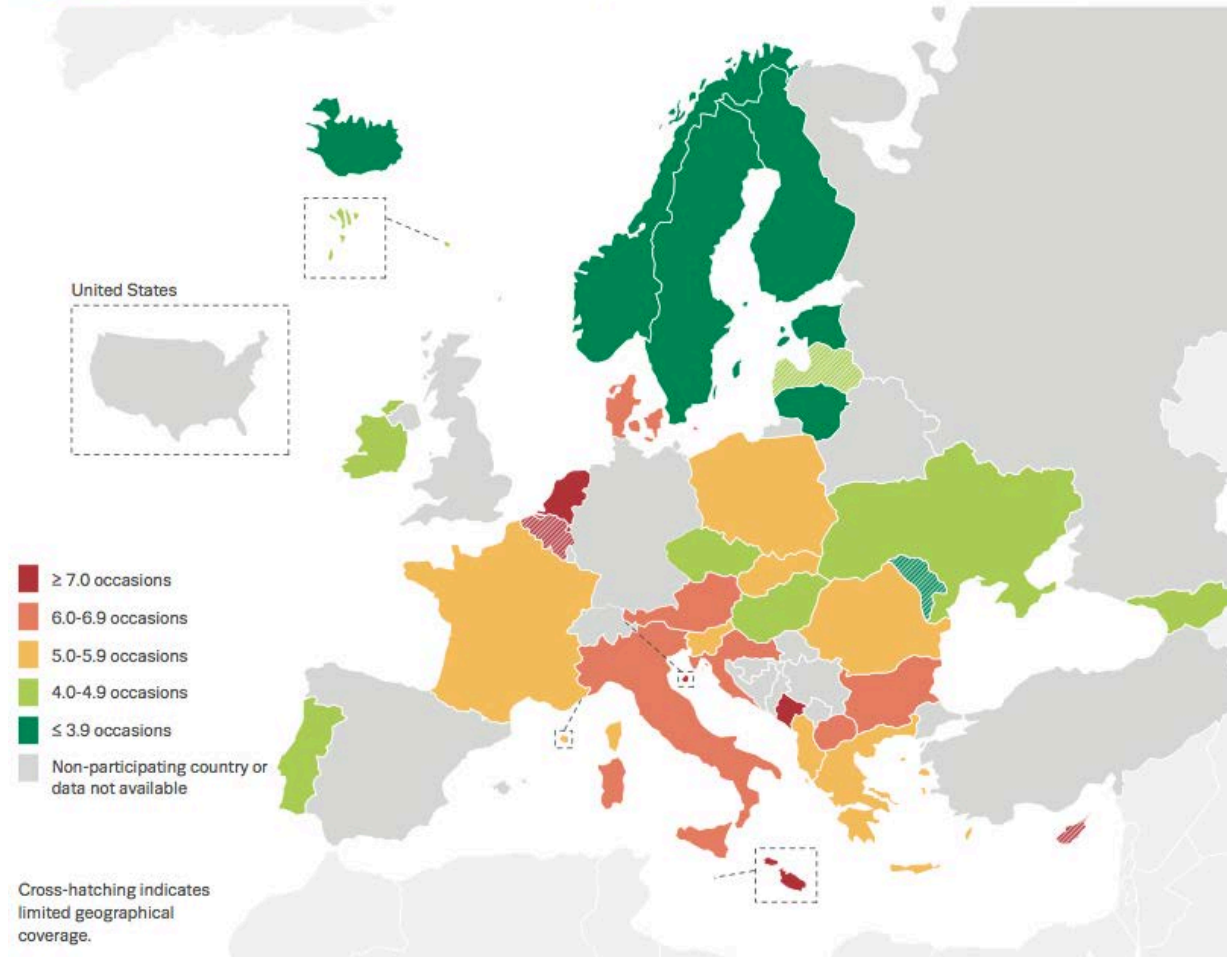


Figure 3a. Average alcohol intake on the last drinking day in centilitres of ethanol among users

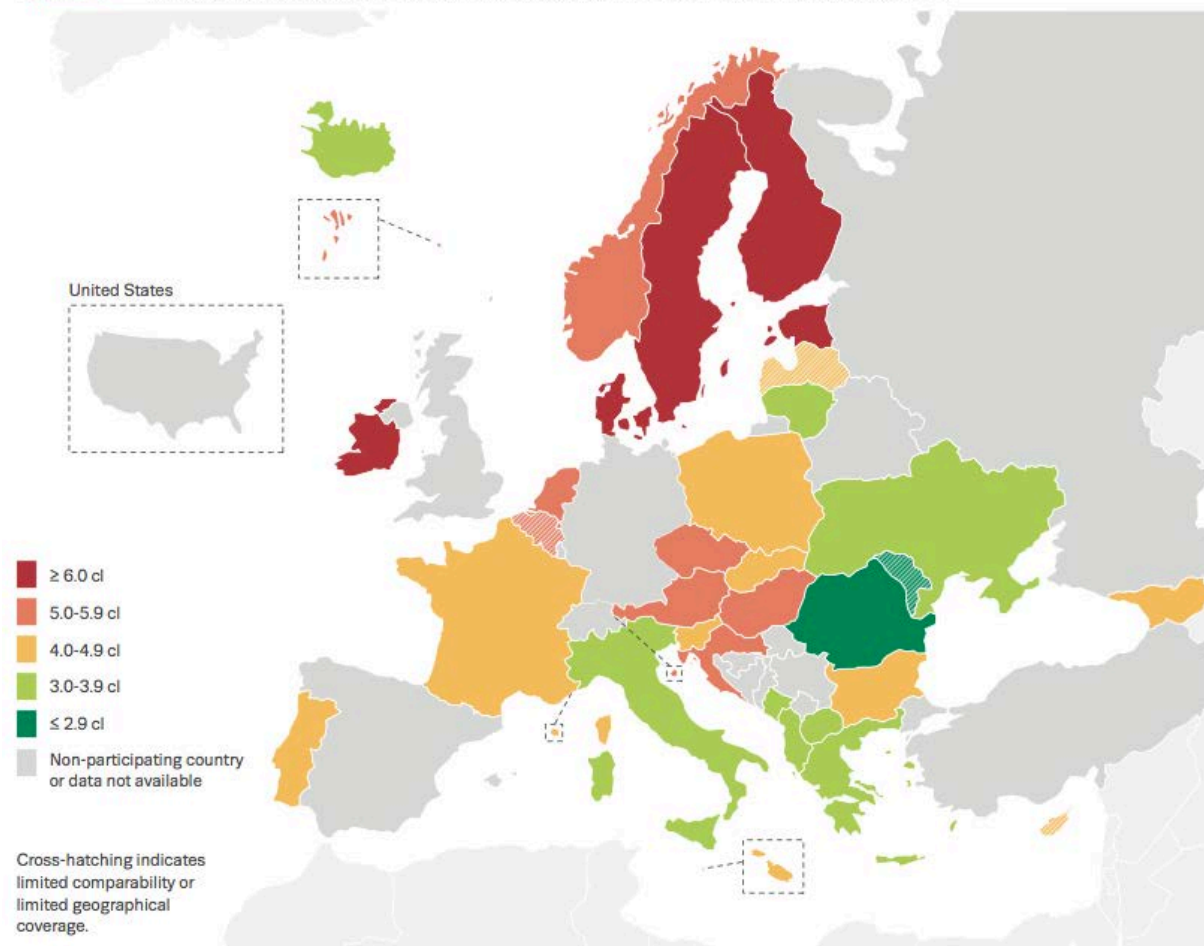


Figure 5a. Prevalence of five or more drinks at least once in the last 30 days; one drink contains approximately 2 centilitres of ethanol (percentage)

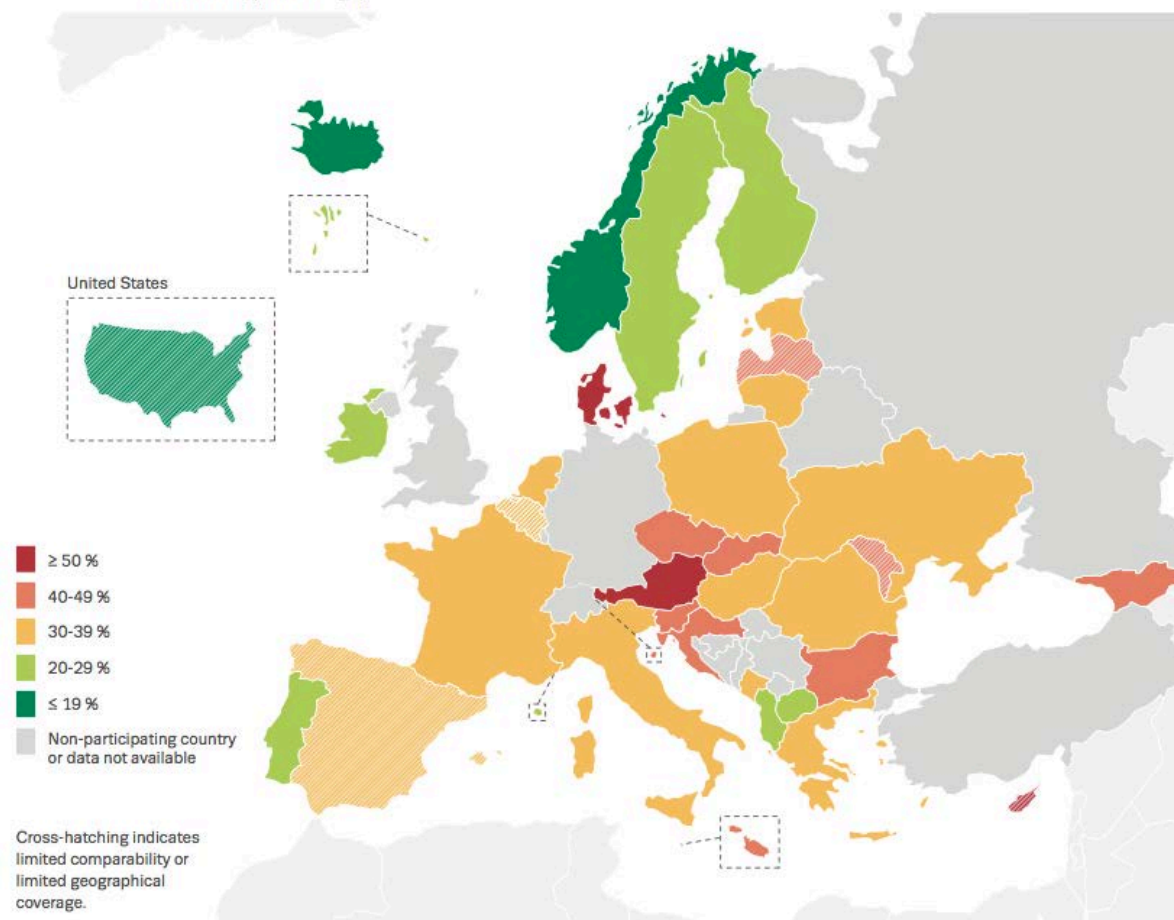


Figure 6a. Prevalence of cannabis use in the last 30 days (percentage)

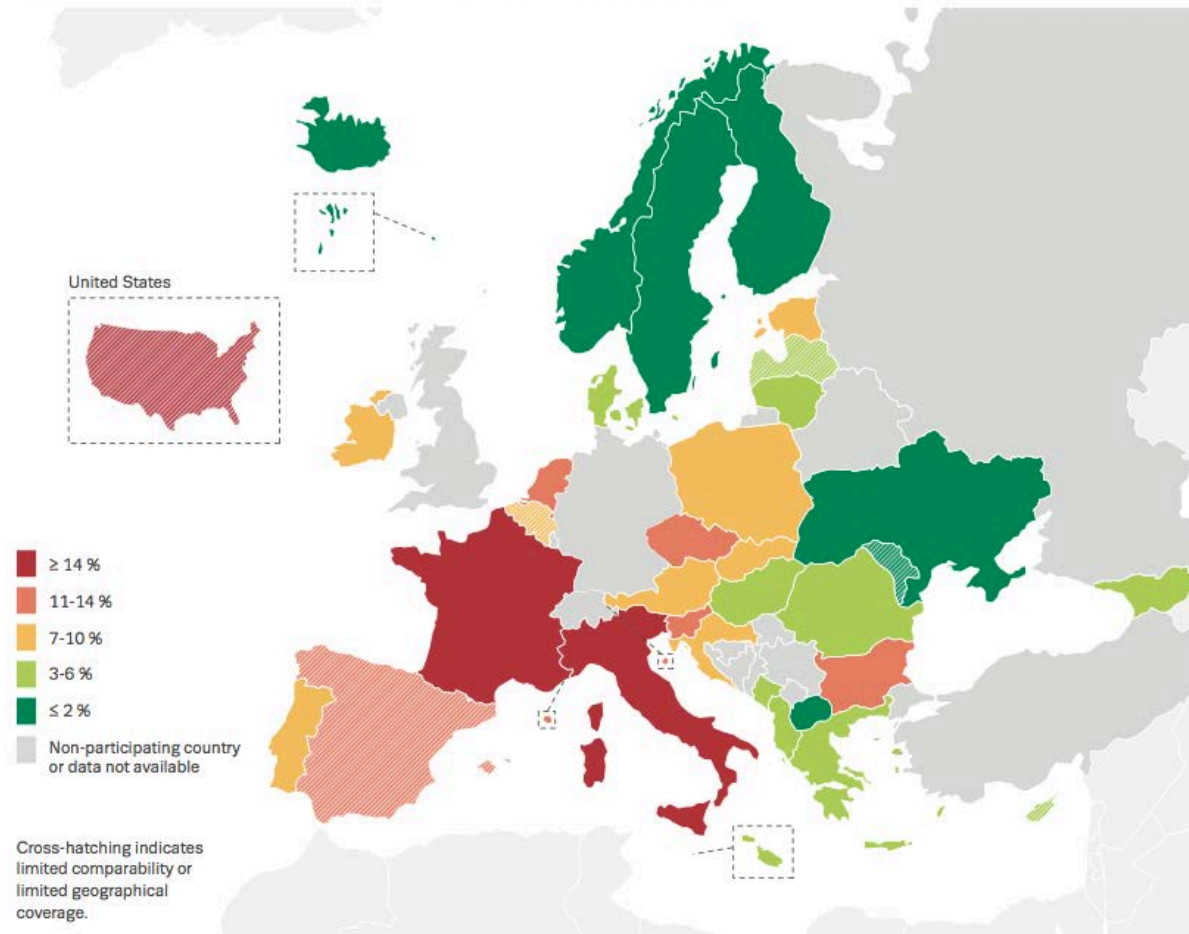


Figure 7a. Frequency of cannabis use in the last 12 months (mean number of occasions among users)

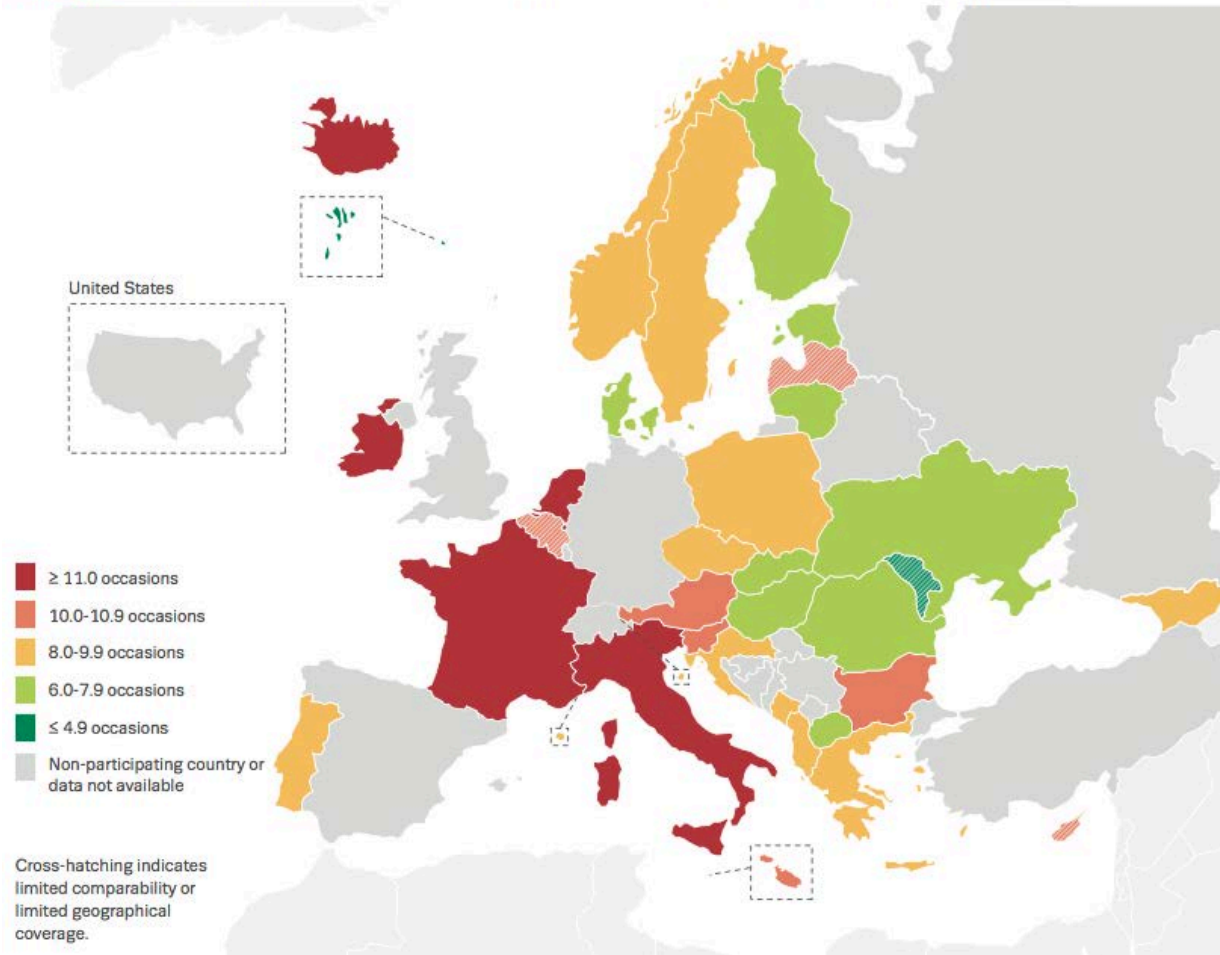


Figure 8a. Prevalence of inhalant use in the last 30 days (percentage)

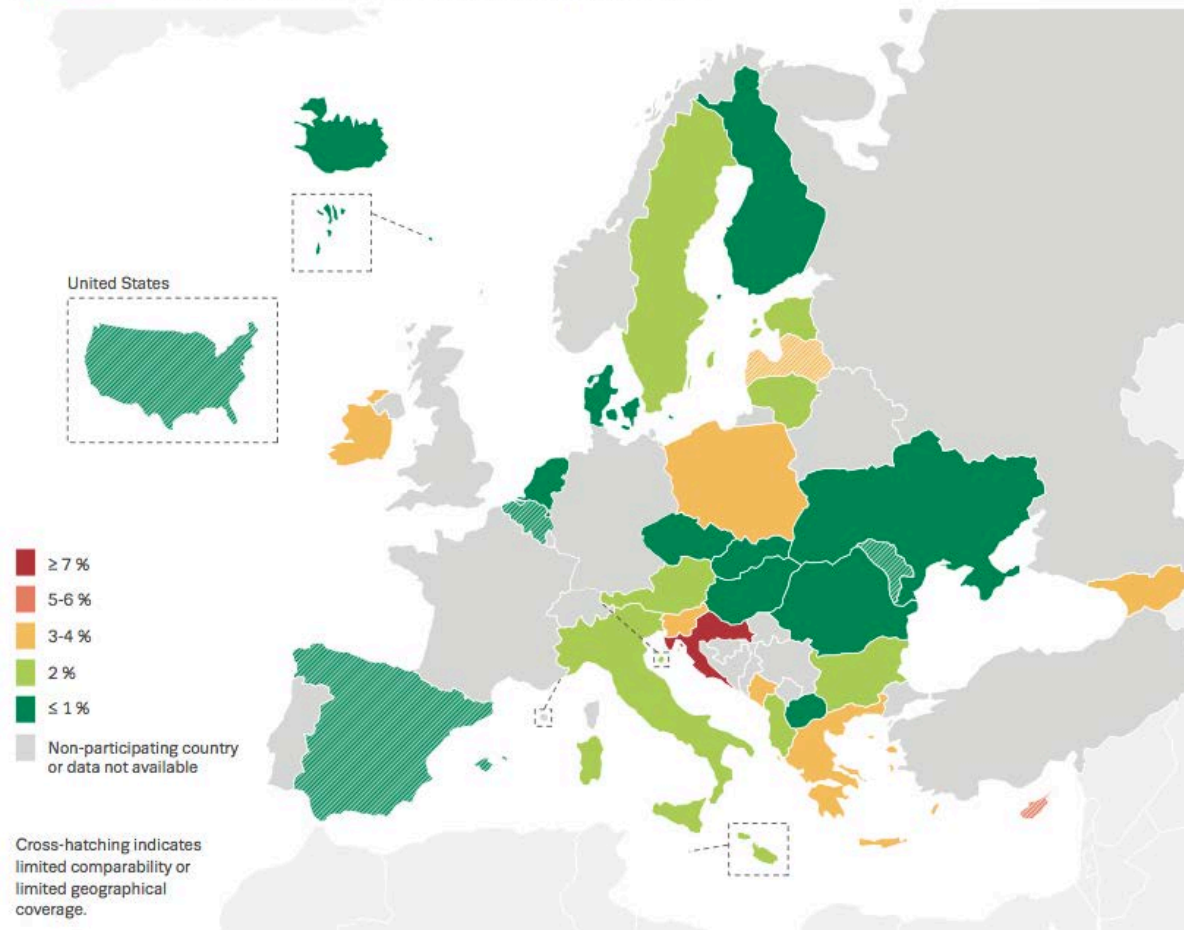


Figure 9a. Prevalence of new psychoactive substance use in the last 12 months (percentage)

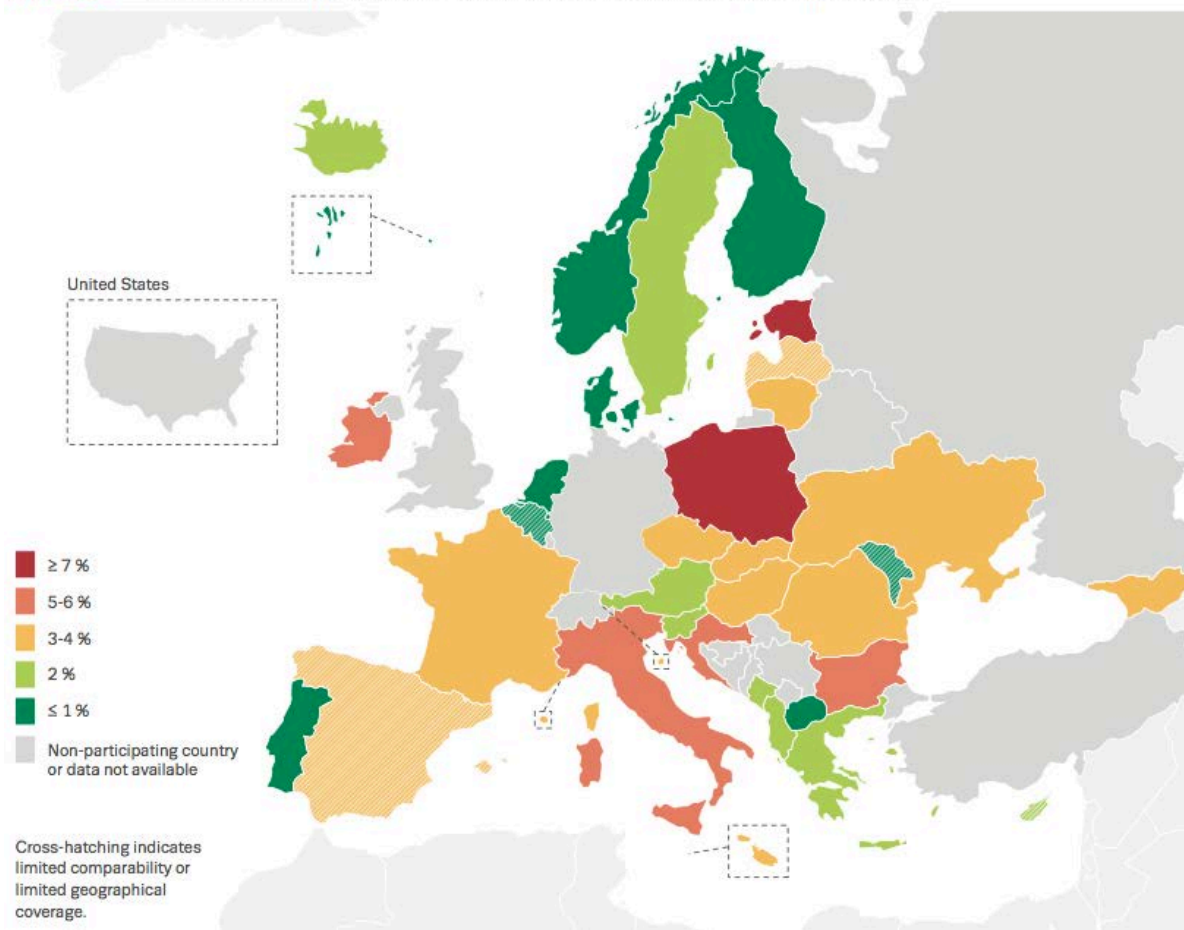


Figure 10. Countries included in the 25-country average (marked in blue)

